

# nambe court

## URBAN LIVING

### *Las Cruces Style*

This elite town home community boasts amenities such as a gated entry, a private clubhouse, large pool and minimal association dues. All units feature a personal garage, private courtyard, beautiful stained concrete floors and a fabulous appliance package.



Contemporary Models  
Starting at \$203,196

Floor Plans ranging  
From 1138 sq. ft. to 1479 sq. ft.

505. 541. 9221

Terriane M. Everhart



505. 541. 9221

505. 639. 1138

terriane@msn.com

www.propertyconsultantslc.com

#### Unit A

2 BEDROOM  
2.5 BATH  
1479 SF.  
\$250,900.00  
\$253,900.00

#### Unit B

2 BEDROOM  
2 BATH  
1419 SF.  
\$259,744.00  
\$243,900.00

#### Unit C

1 BEDROOM  
1.5 BATH  
1148 SF.  
\$192,900.00

#### Unit D

1 BEDROOM  
1.5 BATH  
1138 SF.  
\$202,900.00

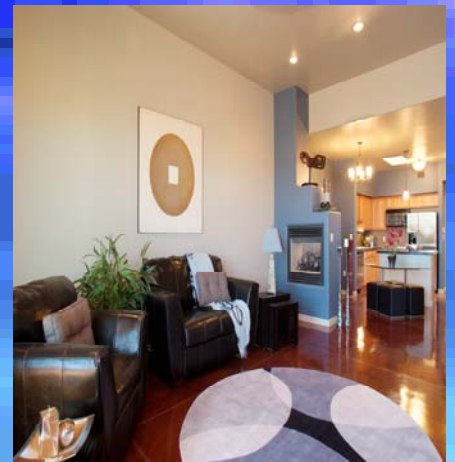
Depictions show a general theme. Pricing, design, floor plans, construction, amenities and/or completion dates subject to change without notice. Owner related to agent. Information is from sources deemed reliable but is not guaranteed by agent or broker.



**Contemporary  
Style**



**Stained Concrete  
Floors and  
Open Floor  
Plan**



**Granite  
Counter Tops**



**Extraordinary  
Views of  
Organ Mountains**

MLS # 777574, 777575, 777570, 777222, 777231